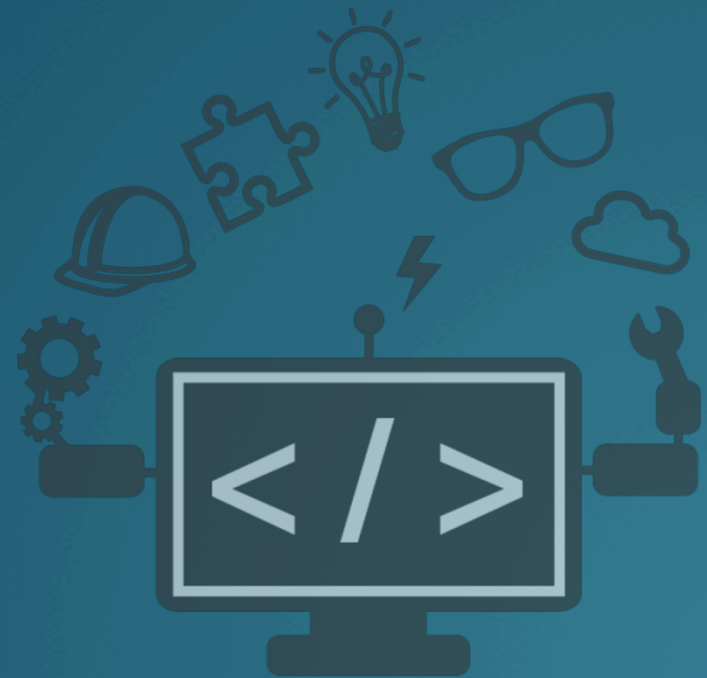


GET YOUR APP READY FOR QUICKBOOKS CONNECT

PEARCE AURIGEMMA

AUGUST 14, 2014

intuit





Pearce Aurigemma

Pearce@Intuit.com

Sr. Developer Evangelist



New API Features

QuickBooks Connect

Deadlines

Apps.com Workflows

Common Security Issues

Q&A

NEW API FEATURES



New extensions for CompanyInfo:

- Offering SKU
- Subscription Status
- Payroll Enabled
- Accountant Enabled

New report endpoints:

- AP Aging Detail
- AR Aging Detail
- Customer Balance Detail
- General Ledger Detail
- Profit and Loss Detail
- Vendor Balance Detail

New QBO Reporting APIs:

- AP Aging Detail
- General Ledger Detail
- Vendor Balance Detail

New entities:

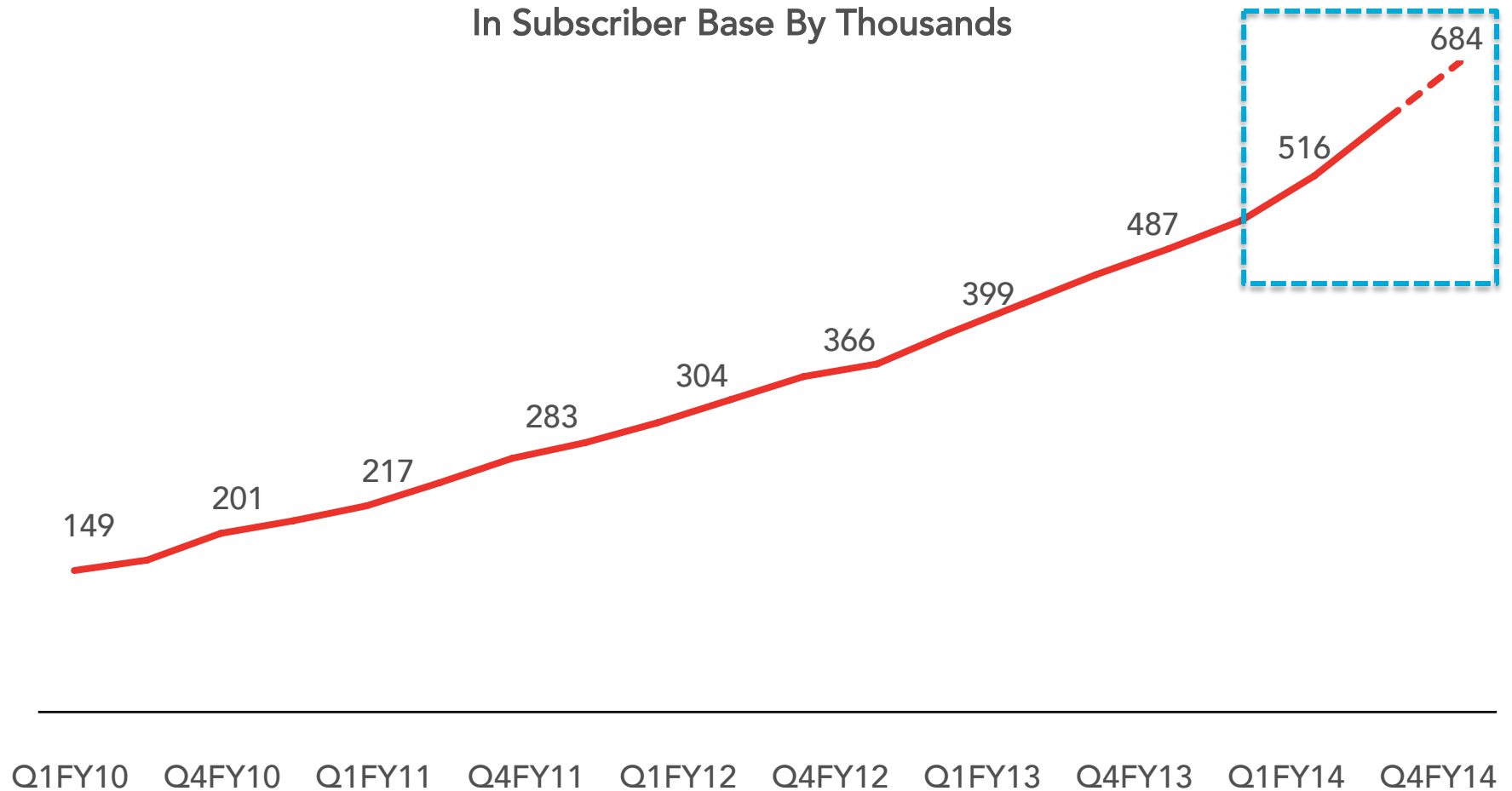
- Budget
- RefundReceipt
- TaxAgency
- TaxService



The Movement Has Begun



QBO WW Growth In Subscriber Base By Thousands



GET THE RIGHT SMB APPS



[Home](#)[Sessions](#)[Agenda](#)[Speakers](#)[Connect](#)[Info](#)[Register](#)

CONNECT

Oct 21–23
San Jose, CA

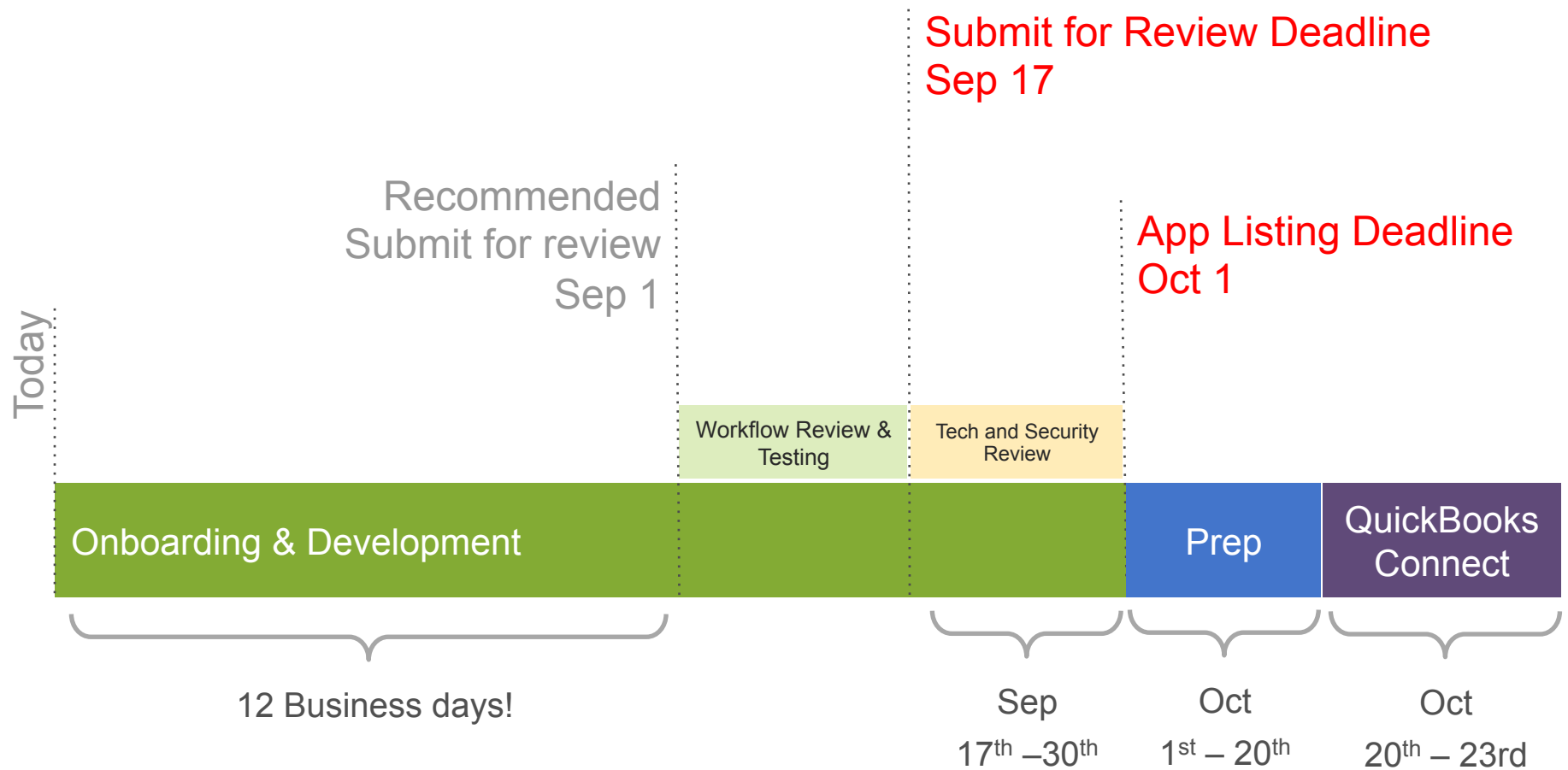
Take your business to the next level.

You'll feel it as soon as you arrive. The sense that you're surrounded by people who share your motivation and determination to succeed. Join us for a unique opportunity to get inspired, learn valuable information and make important contacts. When you leave QuickBooks Connect, you'll be ready to take your business to the next level.

intuit



TIMELINES/DEADLINES





WORKFLOWS

APPS.COM WORKFLOWS

Try/Buy flow from Apps.com



Apps.com WF1.0 – [Docs Page](#)

Time Tracking by TSheets
By TSheets
★★★★★ (500 reviews)
Write a review
Notify me of new reviews
Like | in | +1 |
Mobile, GPS time tracker for fast, accurate payroll.
Try It Now
FREE 14-day trial
"and...BAM done." -Brett B.
\$5 per user/month
\$20 base fee/month
Pricing details
Terms and Conditions
Watch a demo

Don't have an account? [Sign up now.](#)
Sign in
Email or user ID
pearce@intuit.com
Password
.....
☒ Remember me
Sign In
[Forgot your password?](#)
[Forgot your user ID?](#)

intuit. Welcome, Pearce Aurigemma (Not you?)
Start your free TSheets Time Tracker trial
Authorize Intuit to securely share your data to TSheets Time Tracker.
Pearce Aurigemma's company
TSheets Time Tracker
By clicking the Authorize button, I authorize Intuit Inc. to share my data with Time Tracking by TSheets. Additionally, I acknowledge that Time Tracking by TSheets's [Terms and Conditions](#), including [Privacy Policy](#), apply to this app and developer's use of my data.
No, Thanks
Authorize

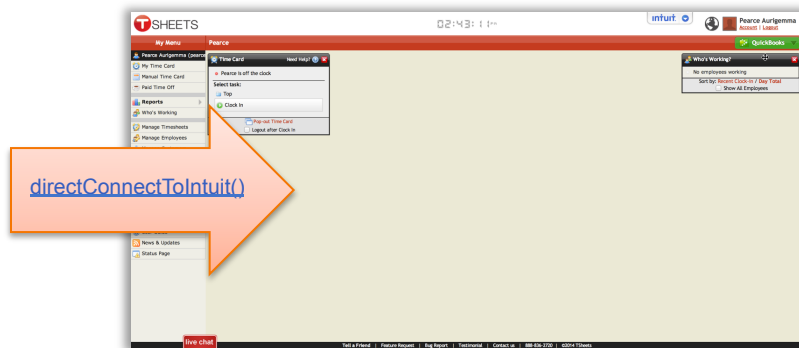
T SHEETS
My Menu
Pearce Aurigemma (pearce)
My Time Card
Manual Time Card
Paid Time Off
Reports
Who's Working
Manage Timesheet
Manage Employee
Manage Customer
Need Help?
Pearce is off the clock
Select tasks
Top
Clock In
Pop-out Time Card
Logout after Clock In
Support
User Guide
News & Updates
Status Page
live chat
Tell a Friend | Feature Request | Bug Report | Testimonial | Contact us | 888-834-2720 | ©2014 TSheets

APPS.COM WORKFLOWS

Try/Buy flow from Apps.com



Apps.com WF1.0 – [Docs Page](#)



[directConnectToIntuit\(\)](#)

Name of App	PHP Test App
Host Name Domain	pearcea.com
App URL	http://dev.pearcea.com/?intuitOpenID=true
Disconnect Landing URL	http://dev.pearcea.com/disconnect
Manage Users URL	http://dev.pearcea.com/?notUsed=anymore
OpenID URL	http://dev.pearcea.com?directConnect=y

intuit



APPS.COM WORKFLOWS

Try/Buy flow from Apps.com



Apps.com WF1.0 – [Docs Page](#)

Test URL: <https://appcenter.intuit.com/TryBuy/IA/b7n8itfzz6>

PHP Test App

App ID: b7n8itfzz6

Type: QuickBooks API

Created: 2013-09-17 02:27:38 PM

Modified: 2014-03-26 03:50:50 PM



APPS.COM WORKFLOWS

Sign In With Intuit
from within your app



SignIn WF1.0 & WF2.0 – [Docs Page](#)

The diagram illustrates the workflow for signing in. It starts with a generic 'Sign In' form on the left, which has fields for 'Username' and 'Password', and a link to 'Start your free trial now.' A large blue arrow points from this form to a more detailed 'Sign in' form on the right. This second form includes a link to 'Sign up now.', fields for 'Email or user ID' (containing 'pearce@intuit.com') and 'Password' (masked with dots), and a 'Remember me' checkbox. An orange arrow points from the 'Sign in' form down to the main application interface.

The screenshot shows the TSheets application interface. The top navigation bar is red and contains the 'TSheets' logo, a clock showing '02:59:17 PM', and user information for 'Pearce Aurigemma' with 'Account' and 'Logout' links. A 'QuickBooks' integration button is also visible. The left sidebar lists various menu items under 'My Menu', 'Reports', 'Add-Ons', and 'Support'. The main content area is divided into several panels. The 'Time Card' panel shows 'Pearce is off the clock' and a 'Select task' dropdown with 'Clock In' selected. The 'Summary' panel displays a yellow banner for 'Trial remaining: 14 days' and lists statistics: 'Users: 1 (View)', 'Customers: 0 (View)', 'Timesheets: 0 (View)', and 'Hours tracked: 0:00'. The 'Who's Working?' panel shows 'No employees working' and a 'Sort by' dropdown set to 'Recent Clock-in / Day Total'.

APPS.COM WORKFLOWS

Sign In With Intuit
from within your app



SignIn WF1.0 & WF2.0 – [Docs Page](#)

- Don't – Start the Oauth process without asking first!
- Do – Show “Sign In With Intuit” button on all sign in pages
- Don't – Call DirectConnectToIntuit()
- Do – Handel new Vs existing users

Welcome to TSheets

Hey there, glad you made it. We can create a TSheets account for you with the information we have from QuickBooks. If you already have a TSheets account, just click 'Link My TSheets Account'.

Create New AccountLink My TSheets Account

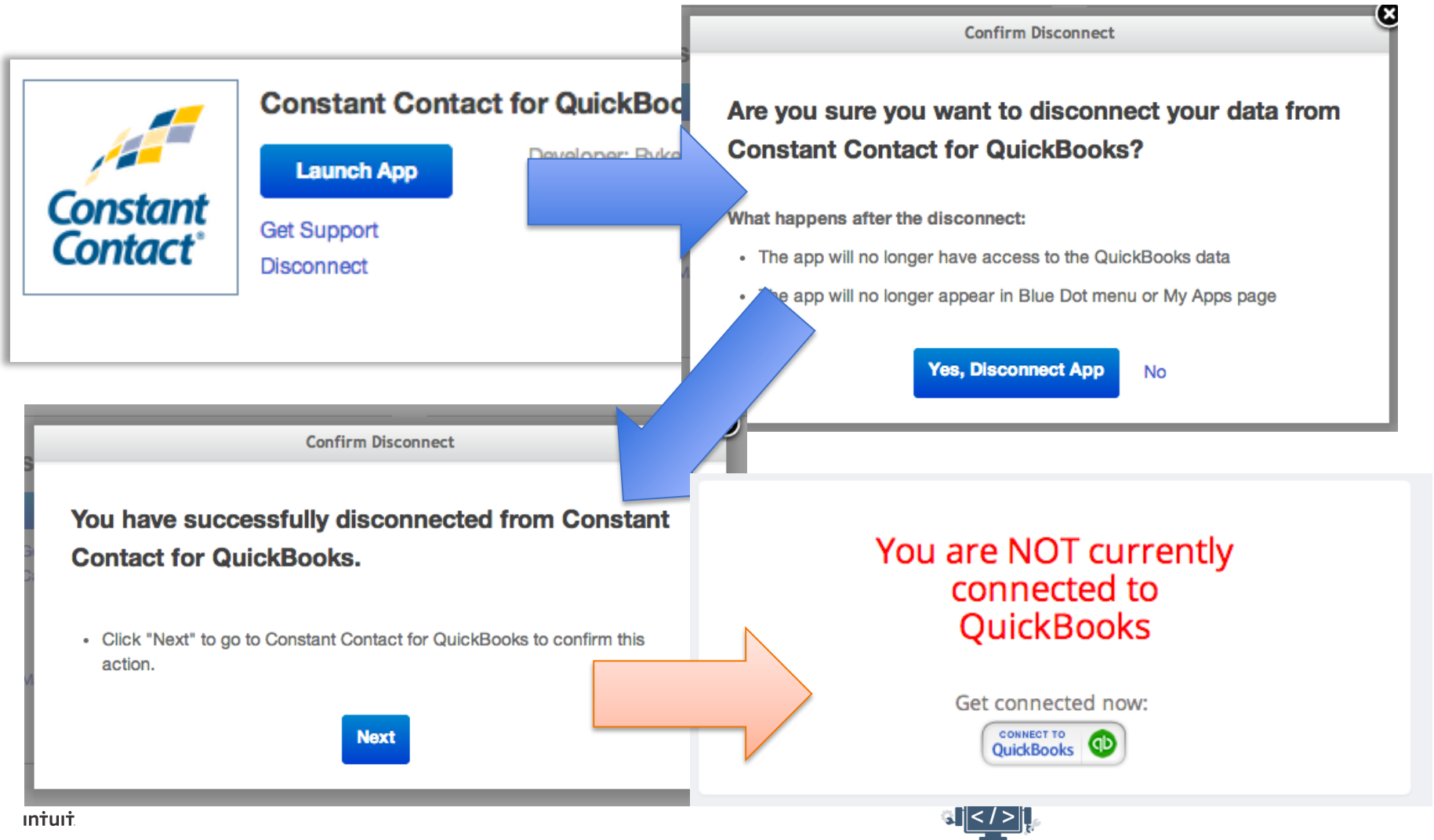


APPS.COM WORKFLOWS

Disconnect



SignInWF7.0– [Docs Page](#)



APPS.COM WORKFLOWS

Disconnect



SignInWF7.0– [Docs Page](#)

Name of App	PHP Test App 
Host Name Domain	pearcea.com
App URL	http://dev.pearcea.com/?intuitOpenID=true
Disconnect Landing URL	http://dev.pearcea.com/disconnect
Manage Users URL	http://dev.pearcea.com/?notUsed=anymore
OpenID URL	http://dev.pearcea.com/?directConnect=y





[Reconnect Documentation](#)

- Tokens expire after 180 days.
- The renewal must be made within 30 days of token expiry.



SECURITY



COMMON SECURITY ISSUES

High Risk

qb



Risk: Brute Force Login

The application does not limit the number or frequency of login failures for its users.

Solution:

The application must deter repeated guessing through a combination of slowing down the attack and logging the failures.



COMMON SECURITY ISSUES

High Risk



Risk: Unencrypted Login Request

Unencrypted login request was sent to the server.

Solution:

- Make sure that all login requests are sent encrypted to the server.
- Make sure that sensitive information is always sent encrypted to the server.



COMMON SECURITY ISSUES

High Risk



Risk: Unencrypted Login Request

Unencrypted login request was sent to the server.

Solution:

- Make sure that all login requests are sent encrypted to the server.
- Make sure that sensitive information is always sent encrypted to the server.



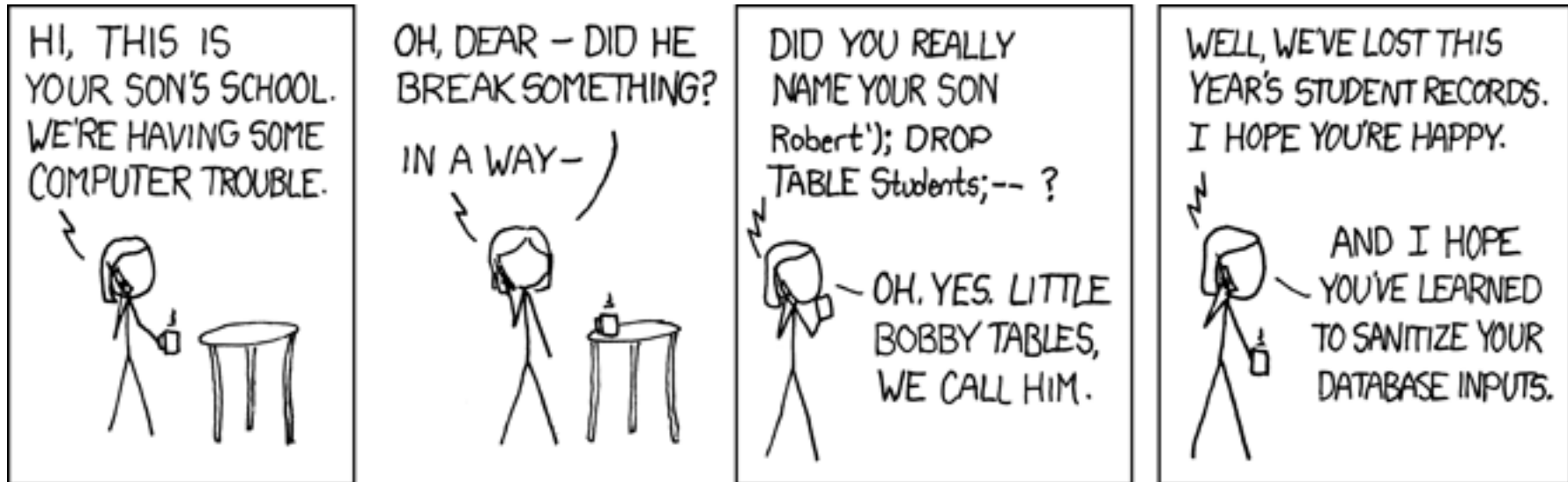
COMMON SECURITY ISSUES

High Risk



Risk: SQL Injection

Solution:



COMMON SECURITY ISSUES

Medium Risk



Risk: Weak Password Policy

The application does not enforce a strong password policy

Solution:

A stronger password policy should be put in place.



COMMON SECURITY ISSUES

Medium Risk



Risk: Missing Secure Attribute in Encrypted Session (SSL) Cookie

The application set a cookie without the “secure” attribute, during an encrypted session.

Solution:

The “secure” attribute must be set accordingly in order to prevent to cookie from being sent.

COOKIE!



COMMON SECURITY ISSUES

Medium Risk



Risk: Query Parameter in SSL Request

A request, which was sent over SSL, contained parameters that were transmitted in the Query part of an HTTP request

Solution:

Make sure that sensitive information is always sent in the body part of an HTTP POST request.



Q&A



Pearce Aurigemma

Pearce@Intuit.com

Sr. Developer Evangelist

I will be sending out a survey, it will be short and will help us bring more valuable information to you. So please take the time to complete it.